

Community Links Officers: Our Role in the Community

Simonetta Juniper
Community Links Officer
Amersham and Chesham Locality

Main drivers

- Ageing population
- Reduced budgets
- Changes in the social fabric of communities

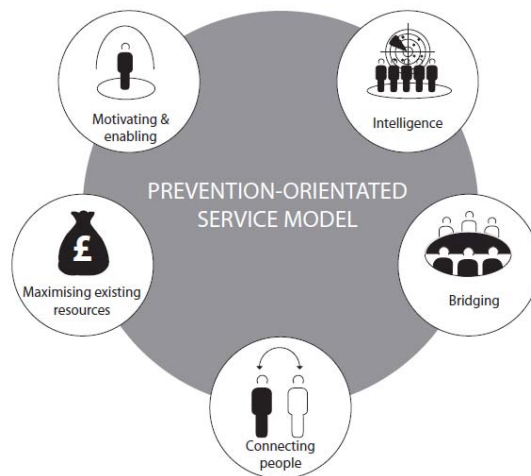
“The options are to raise the eligibility threshold significantly or develop a more sustainable model with a greater emphasis on prevention, independence and resilience.”

Key areas for Maximum Impact

- Reduce isolation and increase social networks
- Increase quantity, value and experience of volunteering
- Ensure appropriate housing
- Increase access to services, support, networks
- Increase low-level support

“The greatest impact will be achieved by keeping those with low to moderate needs independent and healthy for longer and by supporting those with substantial needs to regain their independence.”

Key principles



The new system has 4 elements:



1.
Community Links Officer



2:
Community Practice Worker



3:
Intelligence Hub



4:
Volunteer Hub

Community Links Officer



- Based in the community and linked up to community organisations
- Collecting and analysing data on the availability and effectiveness of groups and activities in the locality
- Informing commissioning and grant provision
- Local knowledge hub for Community Practice Workers
- Convening meetings and events for professionals and community groups
- Developing and facilitating groups and activities including increased volunteering opportunities
- Promoting the prevention agenda

PREVENTION

MATTERS Building community capacity for prevention and early intervention services in Buckinghamshire

THE PREVENTATIVE MODEL: How does it work?

Community Links Officer

Based in the community and linked up to community organisations. Aligned with district councils

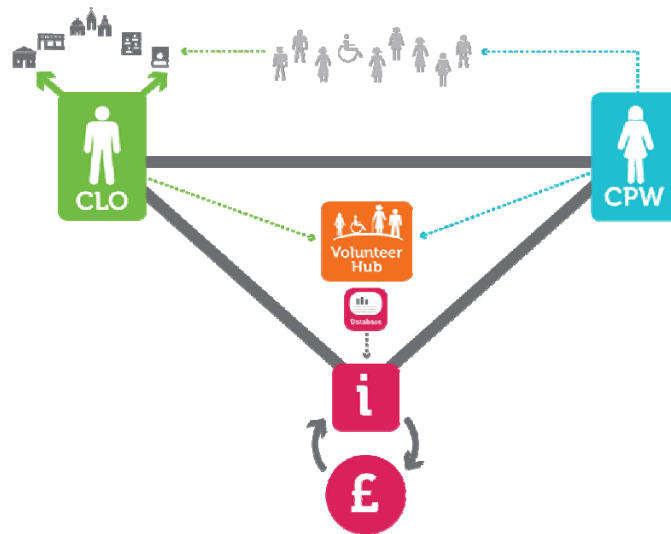


PREVENTION

MATTERS Building community capacity for prevention and early intervention services in Buckinghamshire

THE PREVENTATIVE MODEL: How does it work?

How do the 4 elements fit together?



PREVENTION
MATTERS

Building community capacity for prevention and early intervention services in Buckinghamshire

Localities and CLO contact details

Aylesbury Vale North
Simon Garwood

Aylesbury Vale Central
Lorna Hume

Aylesbury Vale South
Valerie Young

Amersham and Chesham
Simonetta Juniper

Wooburn Green
Tom Hudson

Wycombe
Parveen Dad

Southern Bucks
Paul Hartnell

Map of GP practice and Localities within NHS Buckinghamshire (April 2012)

